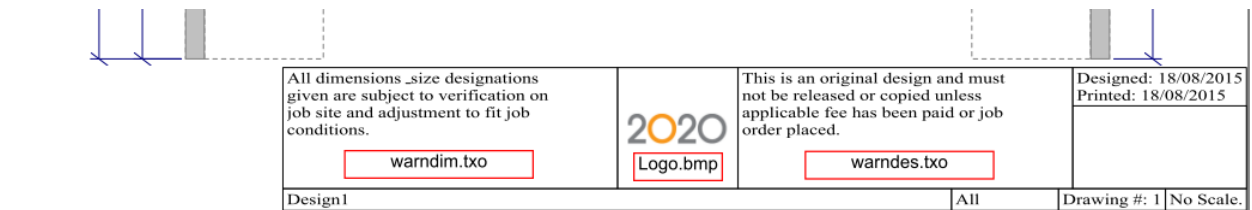


Customising your 20-20 prints

This tutorial will teach you how to customise your 20-20 printouts. It assumes a basic knowledge of Microsoft Windows and file handling.

Default Example

Below is an unmodified Title Bar showing the defaults that appear when you print out plans, elevations and (slightly different) renders. The red boxes will not appear on a normal printout but refer to the 3 areas that can be customised:



Elements common to floorplans, elevations and renders

Logo.bmp This is the logo (usually “2020” that you see on printed plans, elevations and renders. The logo measures 200x200 pixels and can be in .BMP or .JPG format. You are not limited to using this file name as you can change it in the Page Layout area.

You can use any image editing program that supports one of the above formats to create your own logo – even Microsoft Paint. However, you will probably get better results from a free photo editing program such as Photoshop Express or Gimp.

Floorplan and Elevations

Other than Logo.bmp, there are 2 other elements on the plans and elevations that can be customised – these are the 2 text areas on the left and on the right of the logo:

warndim.txo This is the text that shows on the left of the logo. You can fill this with up to 4 lines of 40 characters each.

Do not enter more than 40
characters per line.

All dimensions & size designations
given are subject to verification on
job site and adjustment to fit job
conditions.


warndes.tx0 This is the text that shows on the right of the logo. Again it is limited to 4 lines of 40 characters each:

Do not enter more than 40
 # characters per line.
 # -----

This is an original design and must not be released or copied unless applicable fee has been paid or job order placed.

Renders

Other than the previously mentioned logo, the only area that can be modified on a printed render is a single text area to the left of the logo:

Note: This drawing is an artistic interpretation of the general appearance of the design. It is not meant to be an exact rendition. <div style="border: 1px solid red; padding: 2px; display: inline-block;">warnart.tx0</div>		Designed: 18/08/2015 Printed: 18/08/2015
Design1	All	Drawing #: 1

warnart.tx0 This is the text that shows on the left of the logo. Again it is limited to 4 lines of 40 characters each:

Do not enter more than 40
 # characters per line.
 # -----

Note: This drawing is an artistic interpretation of the general appearance of the design. It is not meant to be an exact rendition.

Editing the files

WARNING: BEFORE you begin editing the files, take a copy of them first. Then, if you mess the edit up you can always put the originals back on.

Logo.bmp

This is usually stored (in Windows 7 and above) in c:\ProgramData\20-20 Technologies\Config.

▶ This PC ▶ TOSH-MIKE (C:) ▶ ProgramData ▶ 20-20 Technologies ▶ Config

Open Windows Explorer, navigate to this location and you will see a list of files which should include Logo.bmp. Right click on the file and choose Edit. Usually, this file will open in Windows Paint or whatever you have chosen as your default image editing program. I will not go into detail here on creating the image you want as this is not a tutorial on image editing but make sure that the file you create is no more than 200x200 pixels and is saved as Logo.bmp

warndim.tx0, warndes.tx0, warnart.tx0

These are usually stored (in Windows 7 and above) in c:\ProgramData\20-20 Technologies\Config.

▶ This PC ▶ TOSH-MIKE (C:) ▶ ProgramData ▶ 20-20 Technologies ▶ Config

To edit the above files, again use Windows Explorer/File Manager to navigate to the above mentioned directory. Right mouse click on the first file, choose 'Open with', click on 'choose default program' and browse until you see 'Notepad' (you may have to click on 'more options').

Make sure the 'Use this app for all .tx0 files' option is ticked and then click on 'Notepad' – the file will then open and you can edit it. You can also now just double click on any other .tx0 file to edit it.

When you edit the file make sure you do not delete out or change anything other than the text that is a line below the '# -----' section or you will have to go back.

You can enter anything you want but a reference to your own company or name is usually a good idea.

Examples of modified Title Bars

All dimensions _size designations are subject to cheking _adjustment by Perfect Kitchens to fit job conditions.		This is an original design and must not be released or copied without the specific agreement of Perfect Kitchens.	Designed: 27/08/2015 Printed: 27/08/2015
Design1		All	Drawing #: 1 No Scale.

Note: This drawing is an artistic interpretation of the design created by Perfect Kitchens. It is not meant to be an exact rendition.		Designed: 27/08/2015 Printed: 27/08/2015
Design1		All Drawing #: 1

Advanced Options

If you know of or are skilled yourself in working with MS Windows, you can build in the option of having the customisation vary according to whoever you design for. For example, if you design for 2 or 3 kitchen manufacturers, you can create a batch file on your desktop that would rename the 3 text and 1 logo files and replace them with others. The batch file would then launch the Design program and the customised text and logo applicable to that company would appear until you decided to quit and change to working for a different company.

Mike Langensiepen
ip Professional